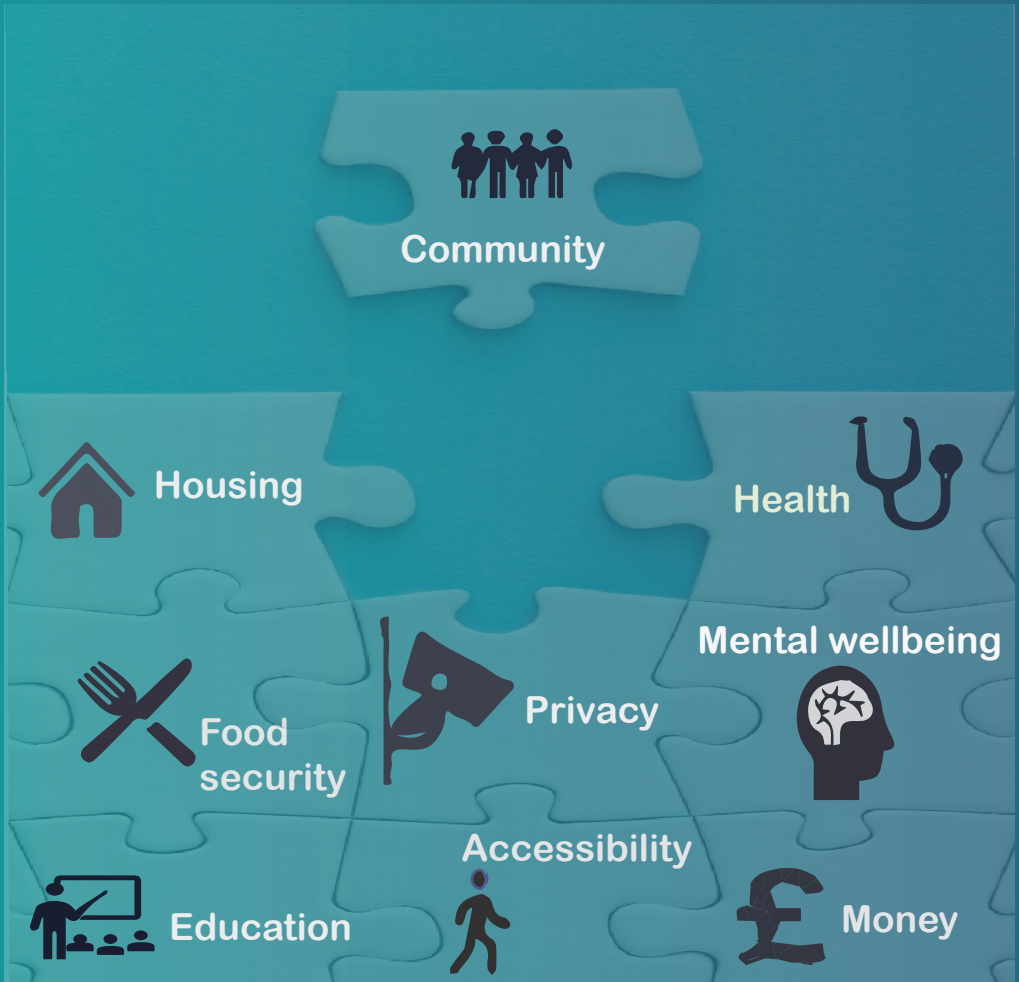




What is **YOUR** missing piece?



Your voice and opinion matter

<http://www.nationalresidentsassociation.co.uk>

Residents have told us about

COUNCIL TAX INCREASES

UNSUITABLE HOUSING

RISING RENTS

**BANKS/PUBS/
SHOPS CLOSING**

**ROAD
WORKS**

**COST OF LIVING
(ENERGY & FUEL)**

POT HOLES

**BLINDING
STREET LIGHTS**

THREAT OF WAR

SPEED

RESTRICTIONS

**FOOD & WATER
SUPPLY**

**LOW EMISSION
CHARGES
(ULEZ)**

SOCIAL CARE

SERVICE CUTBACKS

CRUMBLING LOCAL NHS

ISOLATION/DEPRESSION

CLIMATE ISSUES



Community is key

- ✓ Your concerns are our concerns
- ✓ Let us ensure public money is spent wisely
- ✓ Together we can build better solutions



nationalresidentsassociation@proton.me

Contact us



National Residents Association



@NationalResidentsAssociation

